

Q. HOW DO I UNJAM MY WASTE DISPOSAL?



A.

1. Turn off at wall
2. Remove the black splash guard from waste disposal (just pull it up as it just sits there)
3. Get a large flat head screw driver
4. Move the two blades from side to side

These are the two bits of steel that are on opposite sides of the grinding chamber. They should flow easily. If they do not then you will know something is jammed under the blade. They move 180 degree's. You will need a lot of strength in some cases as something hard has squeezed between the grinding chamber and the blade. Use the flat head to achieve this, and don't be scared to use force to achieve this.

5. The grinding chamber should move under the blades

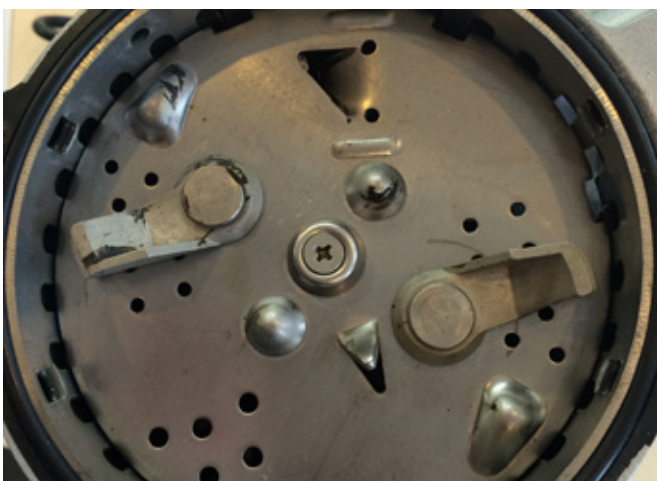
So this could be jammed also. Once you have un-jammed the blades test to make sure the grinding chamber moves freely under the blades.

6. Press the red reset button

7. Remove anything in the grinding chamber that should not be there

8. Turn it on at the wall and then press the switch or button (Depending on what you have)

Turn your waste disposal on (while running water through it). If it's working then place the splash guard back into the waste of the waste disposal. If it does not work repeat the steps above with more force until they all work freely.



IF THIS DOES NOT WORK

Any problems feel free to contact me or my team on
0800 83 83 84